

Unit 10 Day 1 HW
Simplifying Radicals

Name: _____

Date: _____ Per: _____

Simplify:

1) $\sqrt{512}$

2) $\sqrt{200}$

3) $\sqrt{384}$

4) $\sqrt{18}$

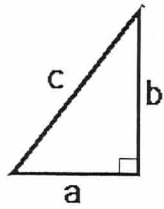
5) $\sqrt{8}$

6) $\sqrt{48}$

7) $\sqrt{192}$

8) $\sqrt{196}$

Pythagorean Theorem



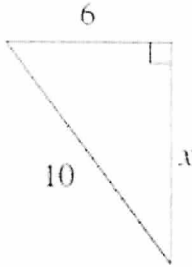
$$a^2 + b^2 = c^2$$

Only in right triangles!

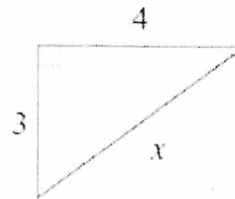
a and *b* are switchable!

c must be the longest side, across from the right angle (little square)

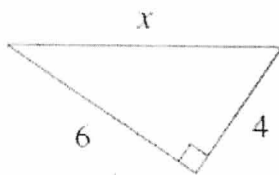
1)



2)



3)



4)

